

Wind protection membranes

Wind protection membrane WALKI Wall Breath 65 (XMW 065)

Wind protection membrane WALKI Wall Breath 95 (XMW 095)

Note: Wind protection membrane JUTADACH 85 (XMW 085) replaces both WALKI membranes in 2023

PAROC Cortex-membrane (XMW 068)



Walki@Wall Breath is a waterproof, but water-vapor-permeable membrane, designed to be used as wind protection for a ventilated facade. The wind protection membrane is used for the ventilation gap on top of the open thermal insulation layer. The membrane prevents air flow entering the thermal insulation layer and provides weather protection to the internal parts of the structure during installation. The membrane can withstand temperatures of up to 80°C, so it is suitable for most wall structures.

The wind protection membrane is available in two different thicknesses: 0.65 g/m² and 0.95 g/m².

The **PAROC Cortex membrane** (XMW 068) is a 600 mm wide Tyvek FireCurb strip that can be used to protect the backgrounds of openings in a ventilated facade structure, where moving air can cause harmful convection. The membrane is installed on top of a rigid stone wool board with a PAROC Membrane pin (XFF 002) by pressing the pins through the membrane into the wool.



APPROVALS:

CE marked according to EN 13859-2

APPLICATION:

Building envelope; external walls

PACKAGE / STORING:

Plastic bag. Optimum storage conditions are +20°C, 50 – 60 % relative humidity, and covered with the original packaging, which contains a moisture protection.

DIMENSIONS

Product code	thickness	width x length	packing	weight	EAN 64380
Wind protection membrane WALKI Wall Breath 65 (XMW 065)	0.65 g/m ²	1.3 m x 20 m	15 rolls / pallet	5 kg	8556906
		2.74 m x 25 m	1 roll (68.5 m ²)		8556905
		2.74 m x 25 m	68 roll / pallet		8571910
		2.74 m x 50 m	1 roll (137 m ²)	9 kg	8556904
		2.74 m x 50 m	46 rolls / pallet	10 kg	8571911
		2.95 m x 50 m	1 roll (147.5 m ²)		8585545
		2.95 m x 50 m	46 rolls / pallet		8571912
Wind protection membrane WALKI Wall Breath 97 (XMW 095)	0.95 g/m ²	2.74 m x 25 m	1 roll	7 kg	8556901
		2.74 m x 25 m	53 rolls/pallet	13 kg	8571913
		2.74 m x 50 m	1 roll		8556900
		2.95 m x 50 m	1 roll		14 kg
PAROC Cortex-membrane (XMW 068)	0.68 g/m ²	0.6 m x 20 m	1 roll		85628736
PAROC membrane pin (XFF 002)		15 mm x 45 mm	500 pc / bag		85807513





PAROC membrane pin (XFF 002) is a plastic pin that can be used to attach a separate wind protection membrane to the surface of a rigid stone wool board. (Note: the bracket is not suitable for use with LD insulation.)

The sharp tip of the pin easily penetrates even the durable and strong surfaces of PAROC Cortex membranes. Therefore, the pin can also be used to ensure the permanence of the wind protection coating on the edge areas of PAROC Cortex products exposed to the wind in situations where it is not possible to tape the seams immediately during the installation work of the wind protection insulation.

INSTALLATION

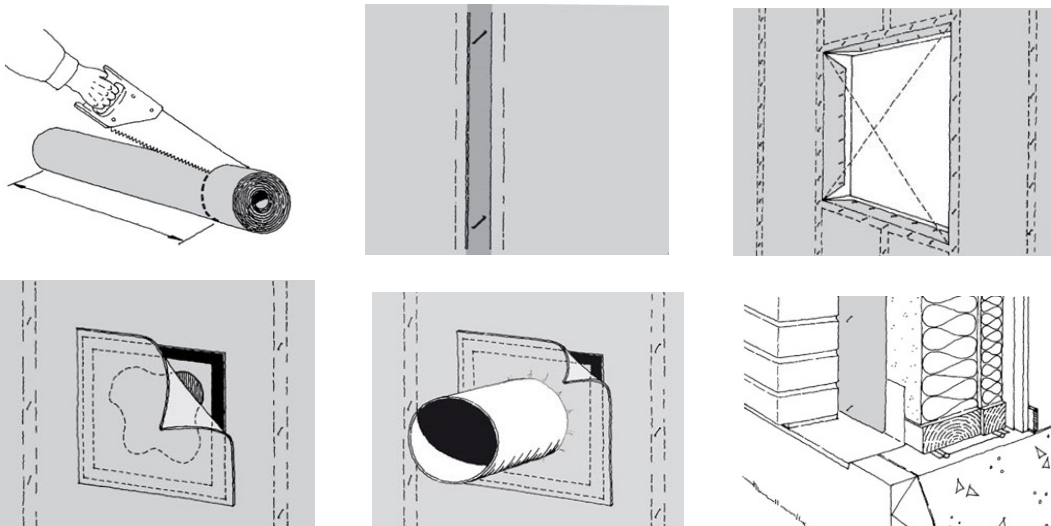
The wind protection membrane is easy to cut with a knife or hand saw (roll).

The seams of the wind protection membrane are overlapped by at least 100 mm and attached to the frame of the building with, e.g., rivets or nail strips. The extension seam is always made on the top of the frame or beam.

For window and door openings, the wind protection membrane is cut diagonally, and the flaps are carefully folded and sealed to the sides of the opening.

Holes and tears are repaired with tape and, if necessary, a piece of wind protection membrane. In the event of major damage, the wind protection membrane is replaced with a new one. All penetrations must be carefully sealed.

The joints of the wind protection membrane must be planned and executed carefully so that possible moisture flowing along the membrane is led outside the structure.



TECHNICAL PARAMETERS for Walki@Wall Breath

Property	value	according to
Fire properties		EN 13859-2
Reaction to fire, Euro class	E	
Mechanical properties		
Tensile strength, longitudinal (N/50 mm) 65 g/m ²	125 N/50 mm	
Tensile strength, transverse (N/50 mm) 65 g/m ²	109 N/50 mm	
Tensile strength, longitudinal (N/50 mm) 97 g/m ²	225 / 50 mm	
Tensile strength, transverse (N/50 mm) 97 g/m ²	150 / 50 mm	
Elongation, longitudinal (%) 65 g/m ²	100 %	
Elongation, transverse (%) 65 g/m ²	100 %	
Elongation, longitudinal (%) 97 g/m ²	65 %	
Elongation, transverse (%) 97 g/m ²	78 %	
Tearing resistance, longitudinal (N) 65 g/m ²	95 N	
Tearing resistance, transverse (N) 65 g/m ²	105 N	
Tearing resistance, longitudinal (N) 97 g/m ²	100 N	
Tearing resistance, transverse (N) 97 g/m ²	120 N	
Air permeability (m ³ /m ² h Pa)		
- Positive pressure (100 Pa)	0.003	
- Negative pressure (100 Pa)	0.003	
Moisture properties		
Resistance to water penetration	W1	
Water vapor resistance, Sd value (m), 65 g/m ²	<0.35 m	
Water vapor resistance, Sd value (m), 97 g/m ²	0.10	
Artificial aging by UV and heat		
Resistance to water penetration	W1	
Tensile strength, longitudinal (%) 65 g/m ²	92 %	
Tensile strength, transverse (%) 65 g/m ²	79 %	
Tensile strength, longitudinal (%) 97 g/m ²	70 %	
Tensile strength, transverse (%) 97 g/m ²	65 %	
Elongation, longitudinal (%) 65 g/m ²	84 %	
Elongation, transverse (%) 65 g/m ²	71 %	
Elongation, longitudinal (%) 97 g/m ²	55 %	
Elongation, transverse (%) 97 g/m ²	55 %	
Durability		
		Wind protection membranes should not be exposed to UV radiation for longer than 3 months.
End of life		
		Dispose in accordance with local regulations. Can be disposed of as non-hazardous industrial waste or incinerated at licensed site.

ACCESSORIES

- PAROC Cortex tape (XST 022)
- PAROC Cortex corner tape (XST 021)
- PAROC Cortex black tape (XST 042)
- PAROC Cortex black, corner tape (XST 041)

